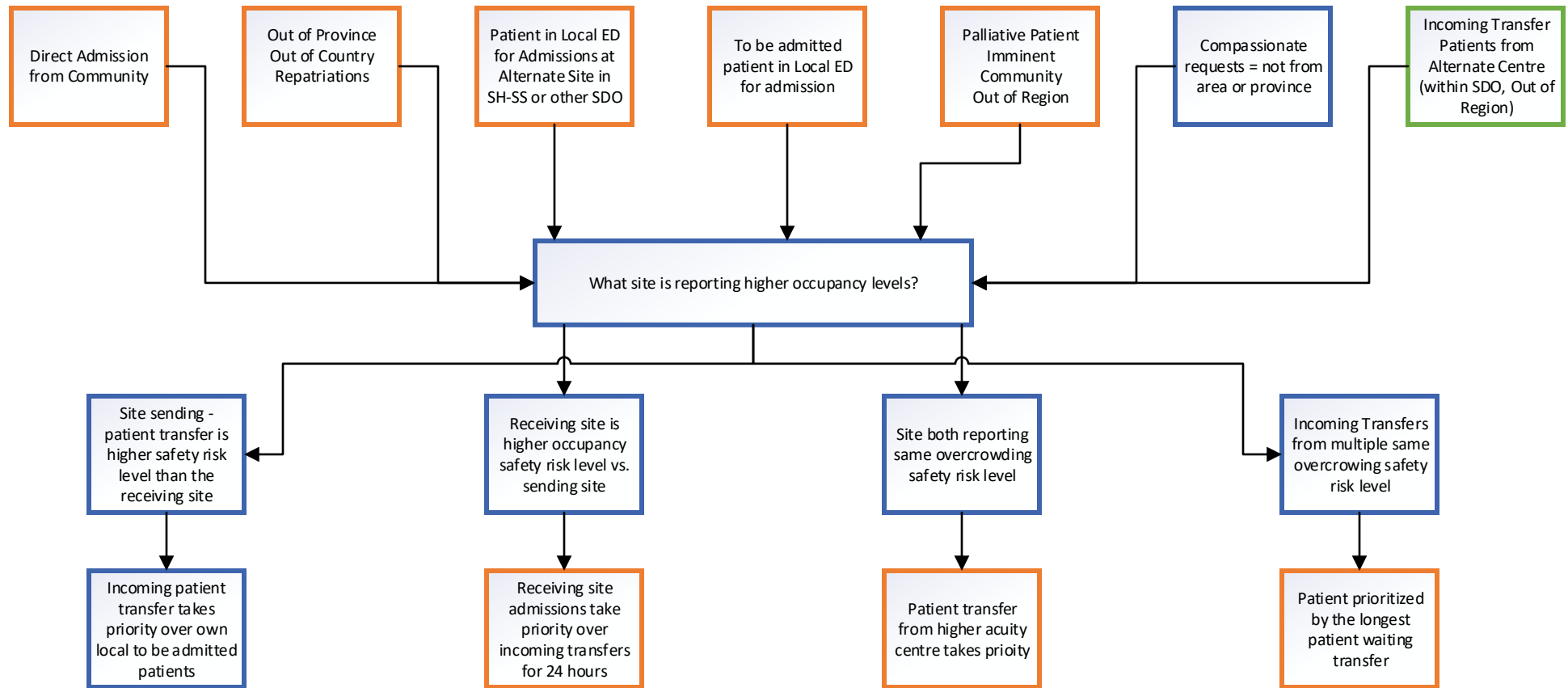


# Interfacility Transfer Communication Pathway Algorithm



Overcrowding safety risk level is to be reviewed daily and priorities adjusted throughout the day based on daily status. When patients awaiting transfers over 24 hours, these patients become priority for placement.

In order to maintain flow – ACL patient transfers and discharges need to be expedited. Sites should consider placing patients and/near discharge into “temporary spaces” to allow incoming admissions into regular beds.

If Community Acute status is BLACK & tertiary sites (i.e. HSC, SBH at critical state, lower acuity patients may need to be accommodated at regional SH-SS sites. No holding beds for anticipated needs. If lab and ED care closed, but patient does not need those services, admission to continue.

