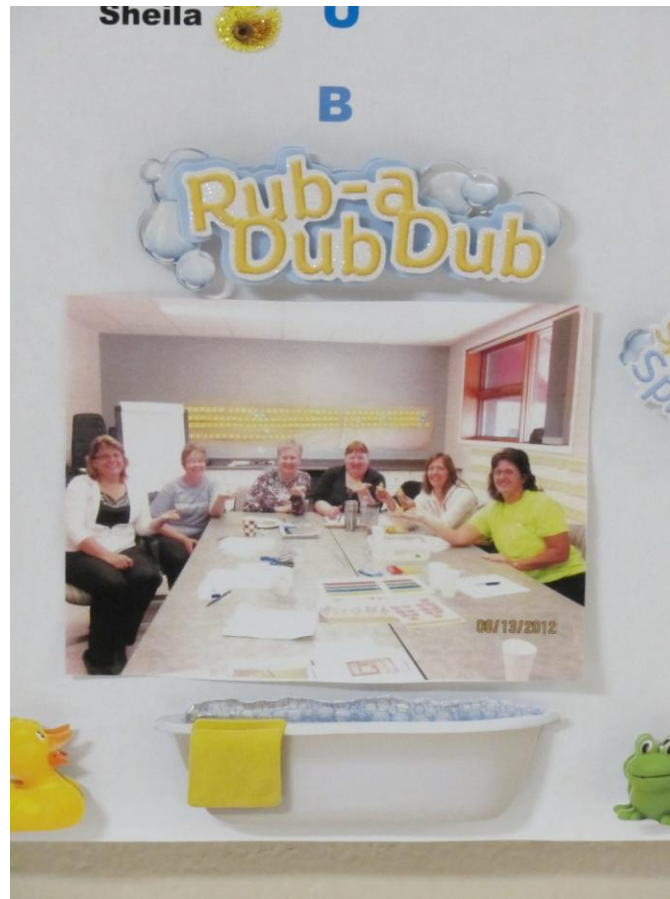


# ST. Claude Laundry Project Rub a Dub Dub!!

## Quality Improvement Project Report Out

May 17, 2013

# St. Claude Laundry Lean Team



1/15/2015

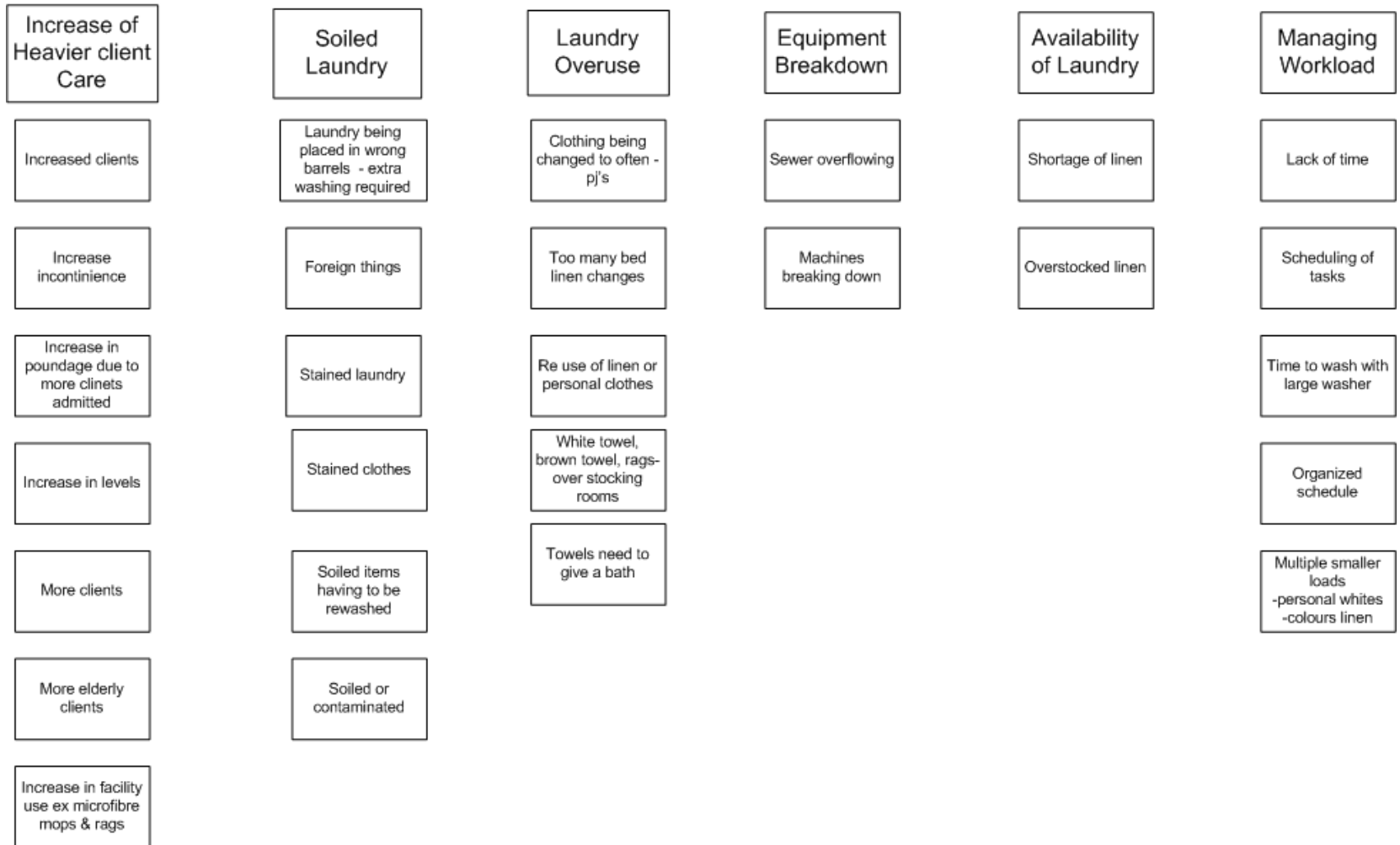
# Define

What process did we looking at?

What was our Problem Statement:

The current process is inefficient due to an increase in heavy client care which has increased workload poundage's and makes the workload overwhelming for staff and produces anxiety in clients / residents.

## Affinity Diagram Brainstorming the Laundry Problem



# Measure

What did we measure and why? How are the measures related to the process?

- **Patterns identified in process mapping which were utilized to measure data:**
- **use of washing machine & dryer;**
- **looking, sorting, folding & stocking behaviours in laundry or in facility;**
- **missing items for HCA's to complete work.**

# Analyze

What story did our measures tell us about our system?

Did the measures validate what we initially thought the problem was?

- **Use of the 3 washing machines & 3 dryers showed lots of variation in how & when it was used.**
- **Looking for laundry to access enough clothes /linen to wash a full load took 18 minutes every 2 weeks or 36 minutes every month.**
- **Sorting laundry showed lots of variation in when & why it was being done. Sorting happening at end of process. Policies for Infection Control not being used resulting in more sorting behaviour than required.**

Learning To See



CONSULTING

# Analyze

- **Folding laundry showed lots of variation in both when & how long it took to complete task.**
- **Stocking shelves were managed differently between PCH & TCU.**
- **Missing linen was measured in PCH/TCU. Brown face cloths were the item missed most. It was missing 7 x's over a 2 week period.**

# Improve

What improvements did our team come up with?

What changes were implemented?

- **Reduce foreign objects in laundry by 50 %.**
- **Reduce amount of paperwork in collecting data about foreign objects by 50% by revamping the form used to collect data.**
- **PCH to be stocked with brown face cloths accurately 80% of the time.**
- **Sheets for PCH/TCU will stop being folded 100%**

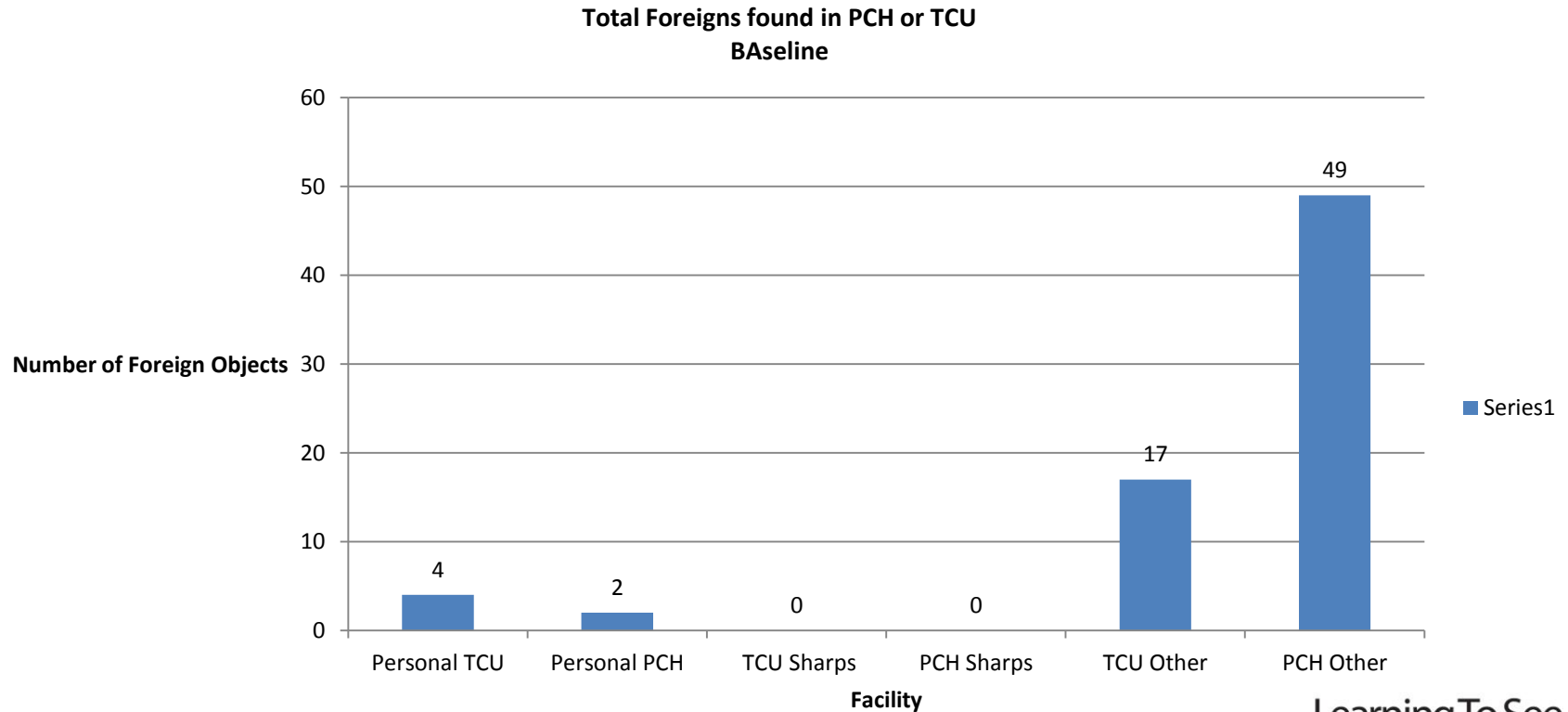


# Improve

- **Laundry Workers will stop looking for laundry 100%**
- **100% reduction of stocking for laundry workers in TCU.**
- **90% reduction of stocking for laundry workers in PCH.**
- **HCA's will follow policy 100% in managing contaminated laundry**
- **Laundry workers will have standardized work routines 100%**

# Foreign Objects

Reduce foreign objects in laundry by 50 %.



**Key Code:**

**Personal – Money, Hearing Aid, comb, Rosaries, wallets, etc.**

**Sharps – Could cause injury and Occurrence Report is required**

**Others – Kleenex, Paper Towel, Sugar, Pads, Pen**

Learning To See



CONSULTING



**What is LEAN?**  
It is a process that synchronizes the flow of work to deliver more with less while providing customers with exactly what they want.

**TEAM**  
Mary  
Lucille  
A  
Jacqueline  
Vera  
D  
Justice  
U  
E  
Shirley

**LEAN**

**Process Map**  
Process mapping is a flow map that shows how work is performed from start to finish. Resources are depicted as a rectangle on a large broad sheet of paper, with different colored Post-it notes on edges of paper. This graphic representation allows an observer to "walk-through" the whole process and see it in its entirety.

**Lean Chat Line**  
Do you have a question you need to be answered?  
Just leave us a message on a sticky post-it below.  
This message will be sent to the team on a regular basis.

**DUCK HUNT**  
Help Ducks Find These Items!  
Sharpies  
Stickers  
Ducks  
Pencils  
Erasers  
Markers  
Scissors  
Tape  
Staplers  
Hole punches  
Rubber bands  
Paper clips  
Index cards  
Post-it notes  
Stickers  
Markers  
Pencils  
Erasers  
Markers  
Scissors  
Tape  
Staplers  
Hole punches  
Rubber bands  
Paper clips  
Index cards  
Post-it notes

**LAUNDRY**

**Sharpies  
Stickers**



12/19/2012

# Foreign Objects

## Reduce foreign objects in laundry by 50 %.



1/15/2015

# Foreign Objects

## Reduce foreign objects in laundry by 50 %.

WHAT DOES STOP SIGNS TELL YOU	WHAT SIGN DO YOU LIKE BEST 1,2,3	SUGGESTIONS FOR IMPROVING SIGNS
<p>Oops - can't forget to check pockets HKA</p> <p>check pockets see any thing</p> <p>STOP</p> <p>Check all pockets before placing in laundry</p> <p>Make sure nothing is in the pockets!!</p> <p>stop too check pockets</p>	<p>Like #1 for personal laundry</p> <p>Like #1 very easy</p> <p>①</p> <p>#1 simple easy to understand (noticed)</p> <p>#3 say's it all</p>	<p>Keep it simple</p> <p>#3 too complicated</p> <p>Large colorful</p> <p>#3 To much stuff to absorb #1 is easy to glance and understand</p> <p>Nice - BIG</p> <p>simple</p>

# Foreign Objects

Reduce foreign objects in laundry by 50 %.



# Foreign Objects

Reduce foreign objects in laundry by 50 %.



# Foreign Objects

Reduce foreign objects in laundry by 50 %.





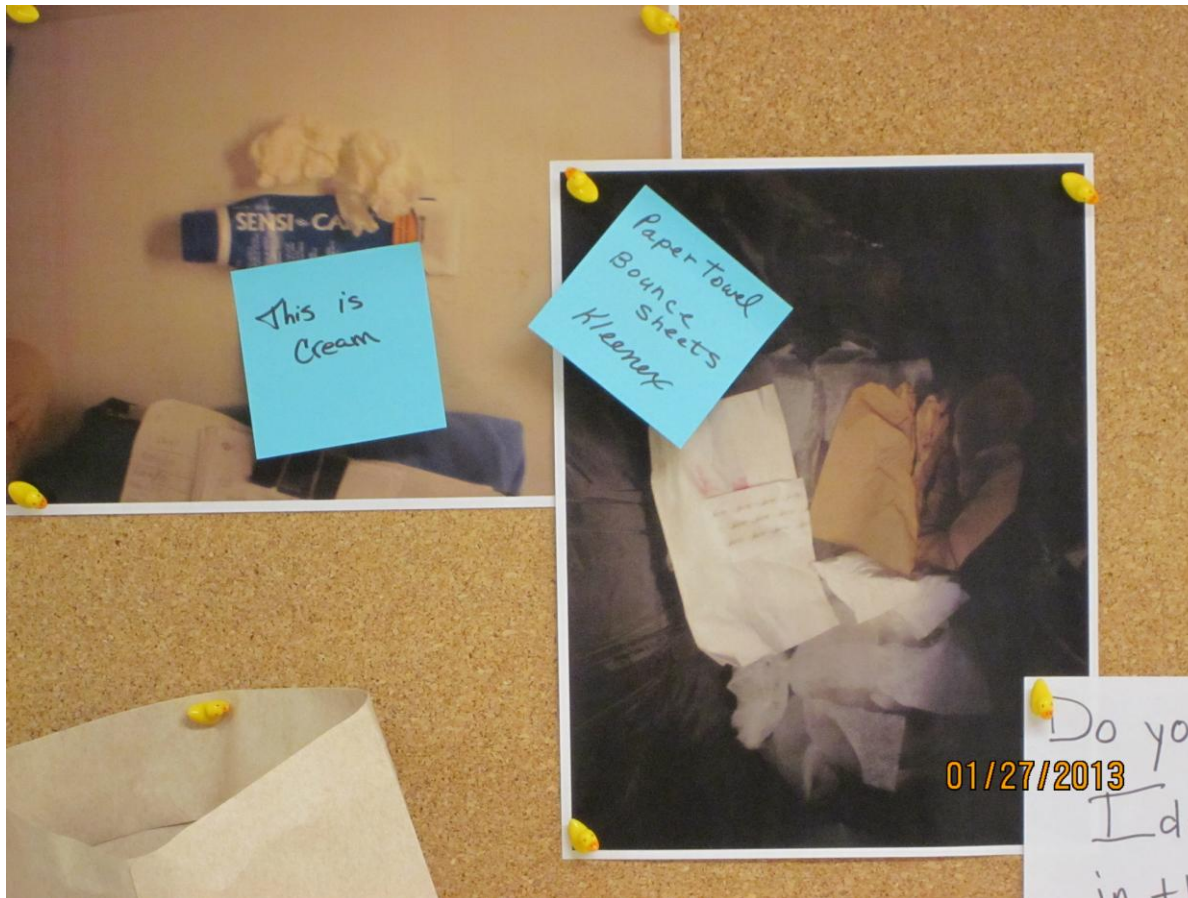
# Foreign Objects

## Reduce foreign objects in laundry by 50 %.



# Foreign Objects

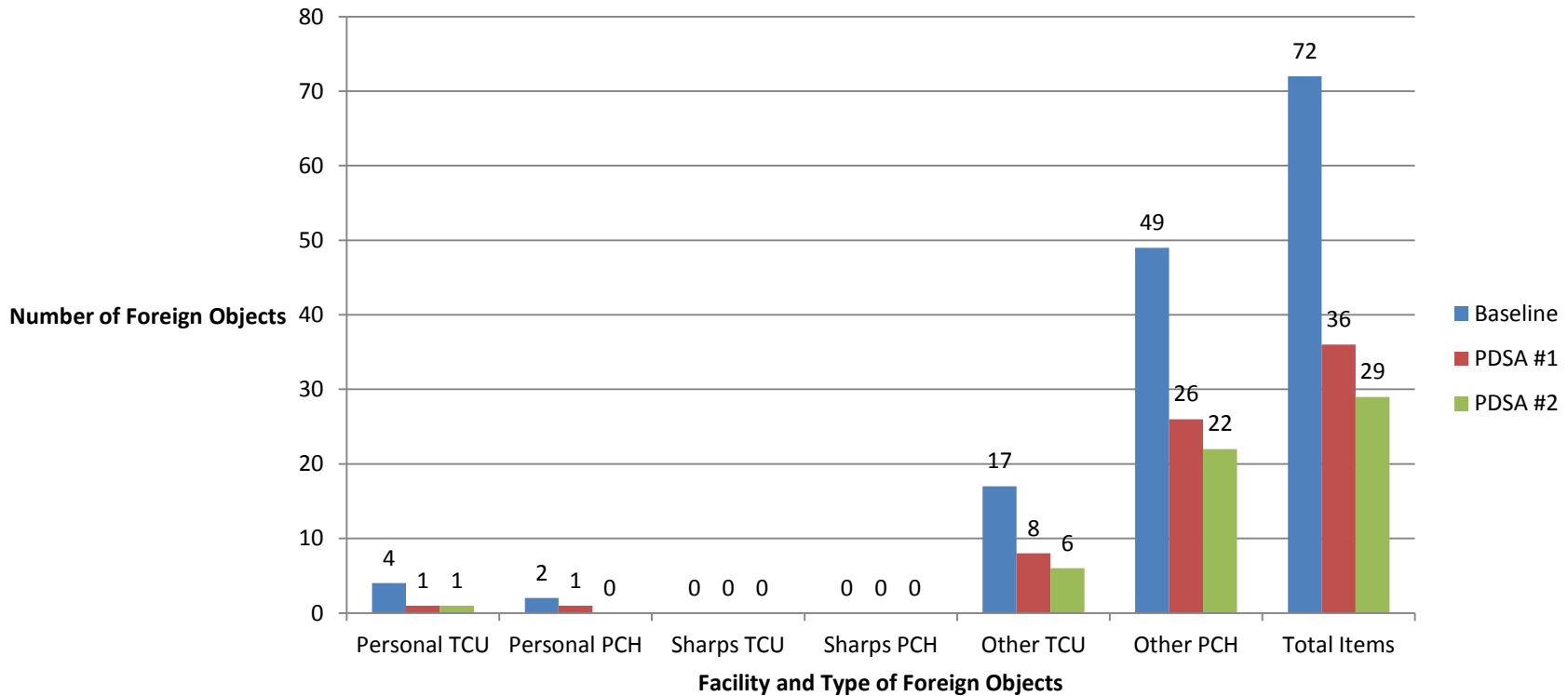
## Reduce foreign objects in laundry by 50 %.



# Foreign Objects

## Reduce foreign objects in laundry by 50 %.

Comparison of PDSA's  
Collection of Foreign Objects in St. Claude Laundry





		Foreign Material Report 2013			Stained Items		
		<i>Personal</i>	<i>Sharps</i>	<i>Others</i>	<i>Towel/ Face Cloth</i>	<i>Apron</i>	<i>Personal Clothing</i>
TCU - March							
PCH - March							
TCU - April							
PCH - April							

## New Foreign Materials Report

# Reduce amount of paperwork in collecting data about foreign objects by 50% by revamping the form used to collect data

		Foreign Material Report 2013			Stained Items		
		Personal	Sharps	Others	Towel/ Face Cloth	Apron	Personal Clothing
TCU - March				② 11	1111	111	
				② 11 ④ 1			
				② 11			
PCH - March				② 11			
				② 11 11			
				② 11 ② 11 11			
				② 11 ② 11 11 ② 1			
TCU - April							
PCH - April							

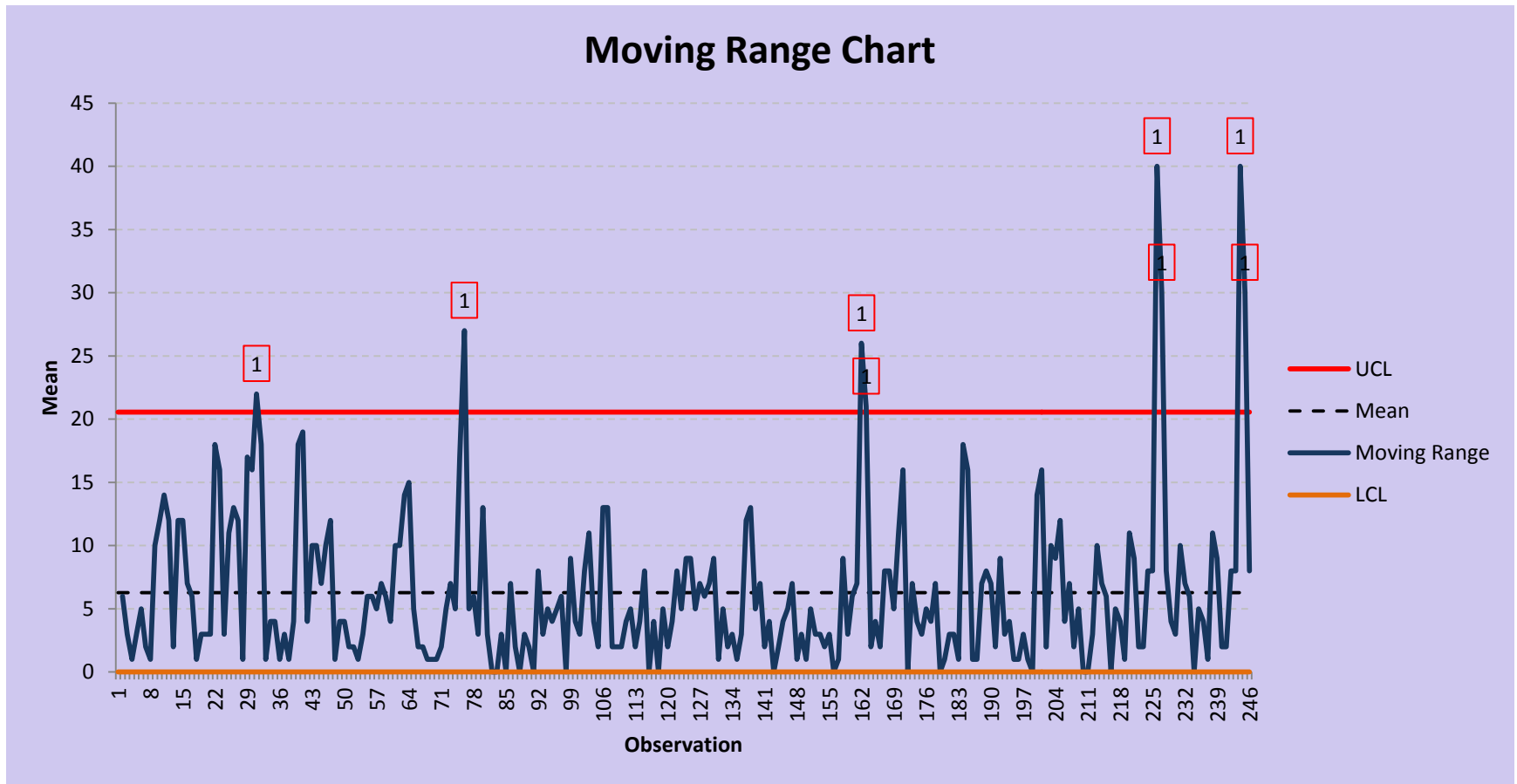
S:\Forms\Laundry\Foreign Material Report.doc

# PCH to be stocked with brown face cloths accurately 80% of the time

## # of Brown Face cloths in PCH Rooms

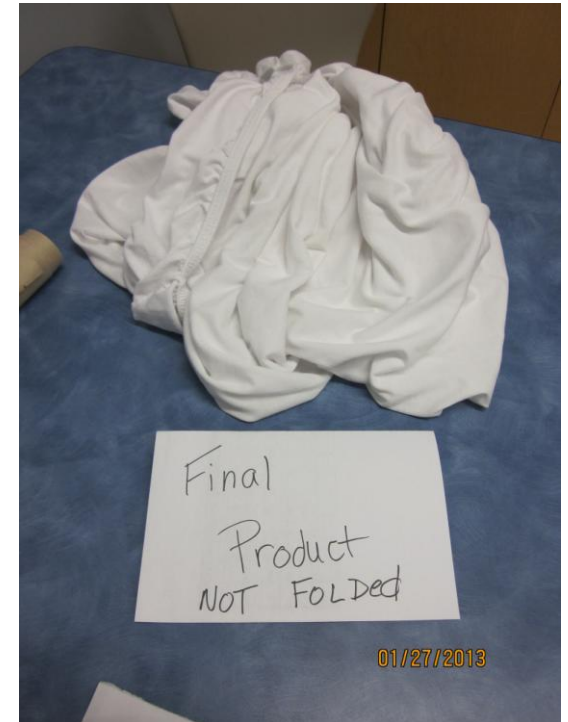


# Sheets for PCH/TCU will stop being folded 100%

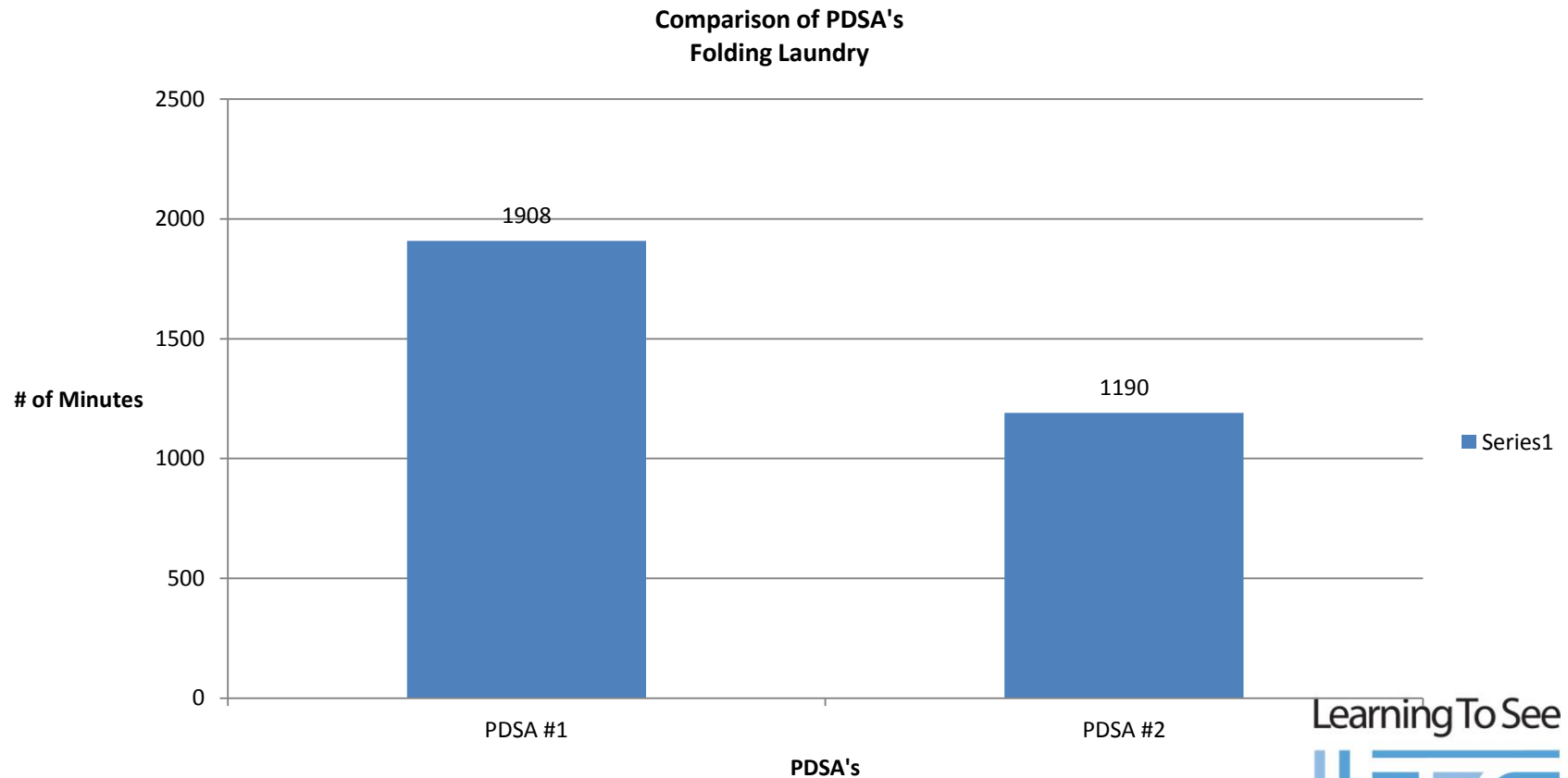




# Sheets for PCH/TCU will stop being folded 100%



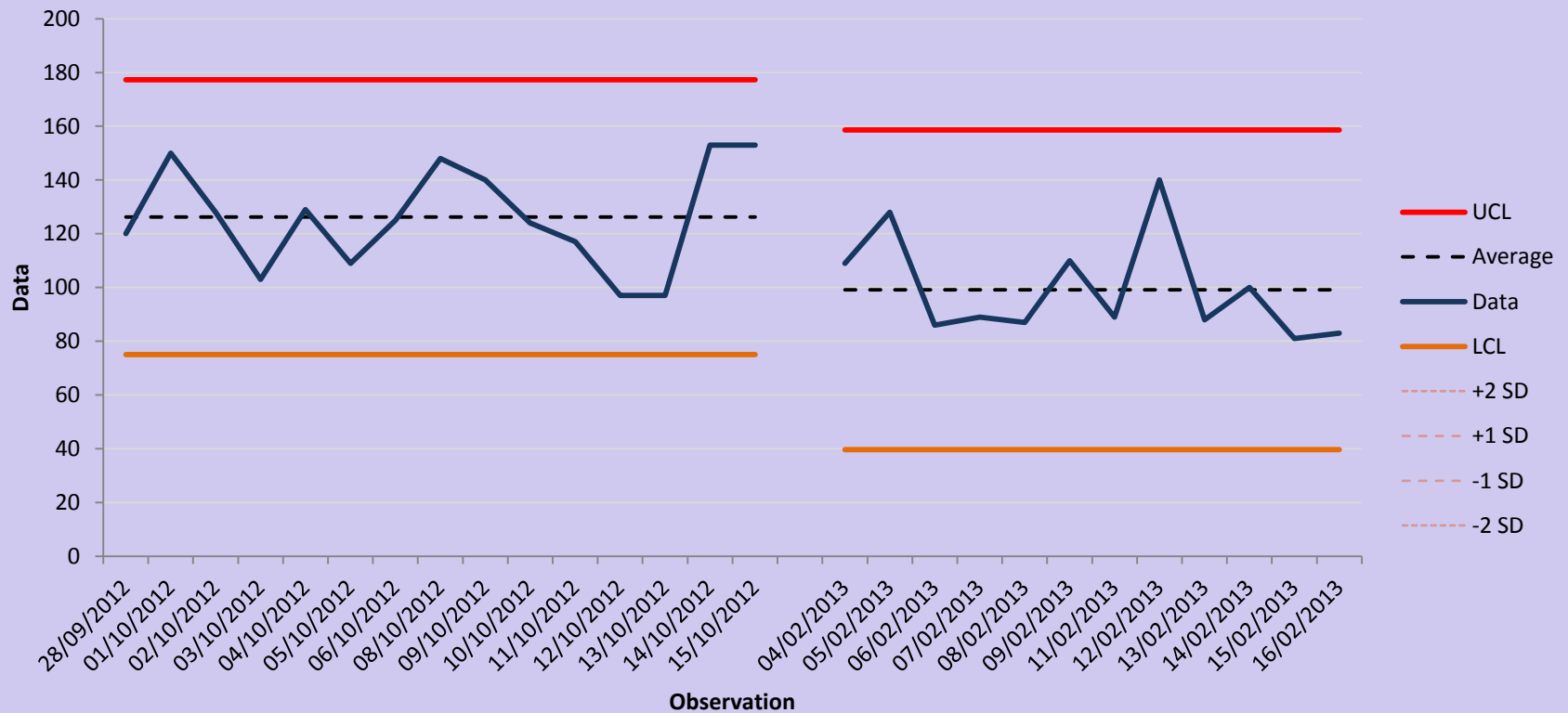
# Sheets for PCH/TCU will stop being folded 100%



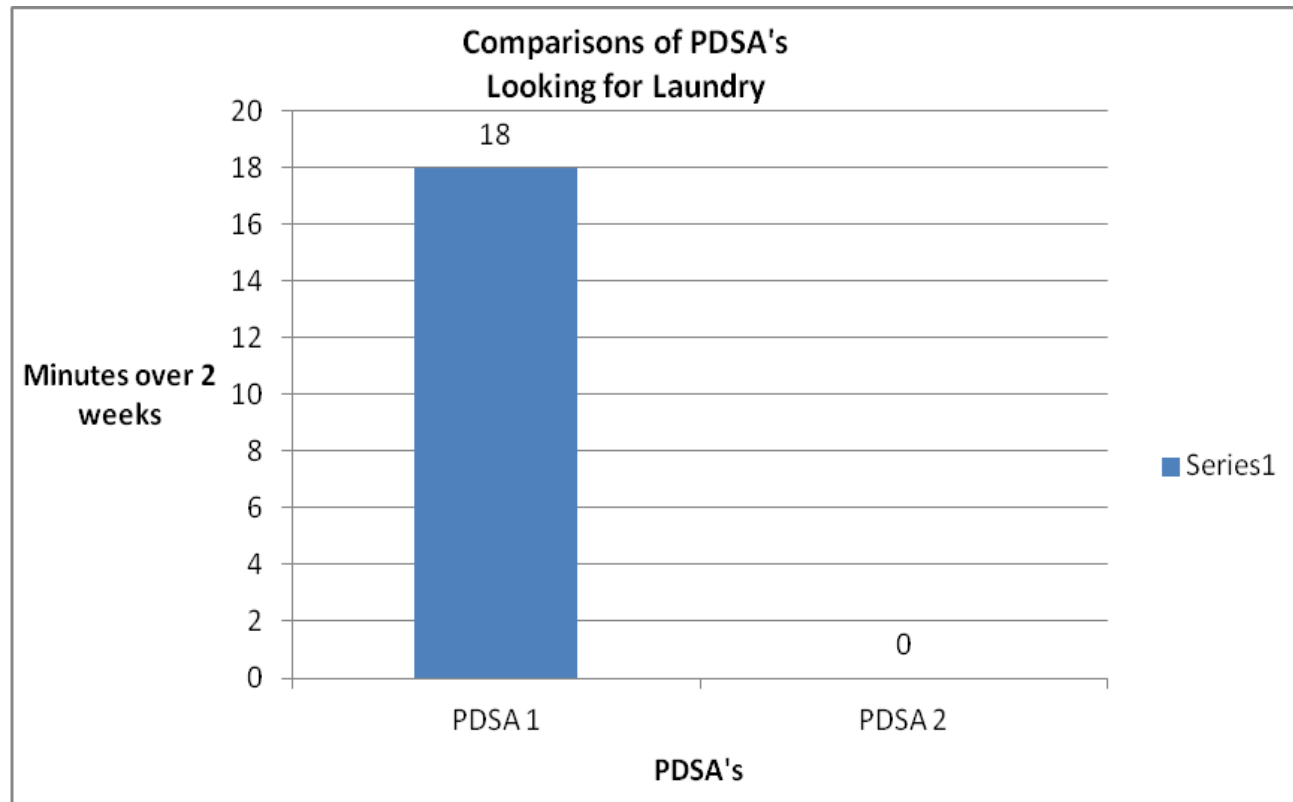
SAVINGS = 11 hrs 58 mins saved over 2 weeks  
= 23 hrs 56 mins / 4 wks / 1 month saved

# Sheets for PCH/TCU will stop being folded 100%

## X-Chart



# Laundry Workers will stop looking for laundry 100%

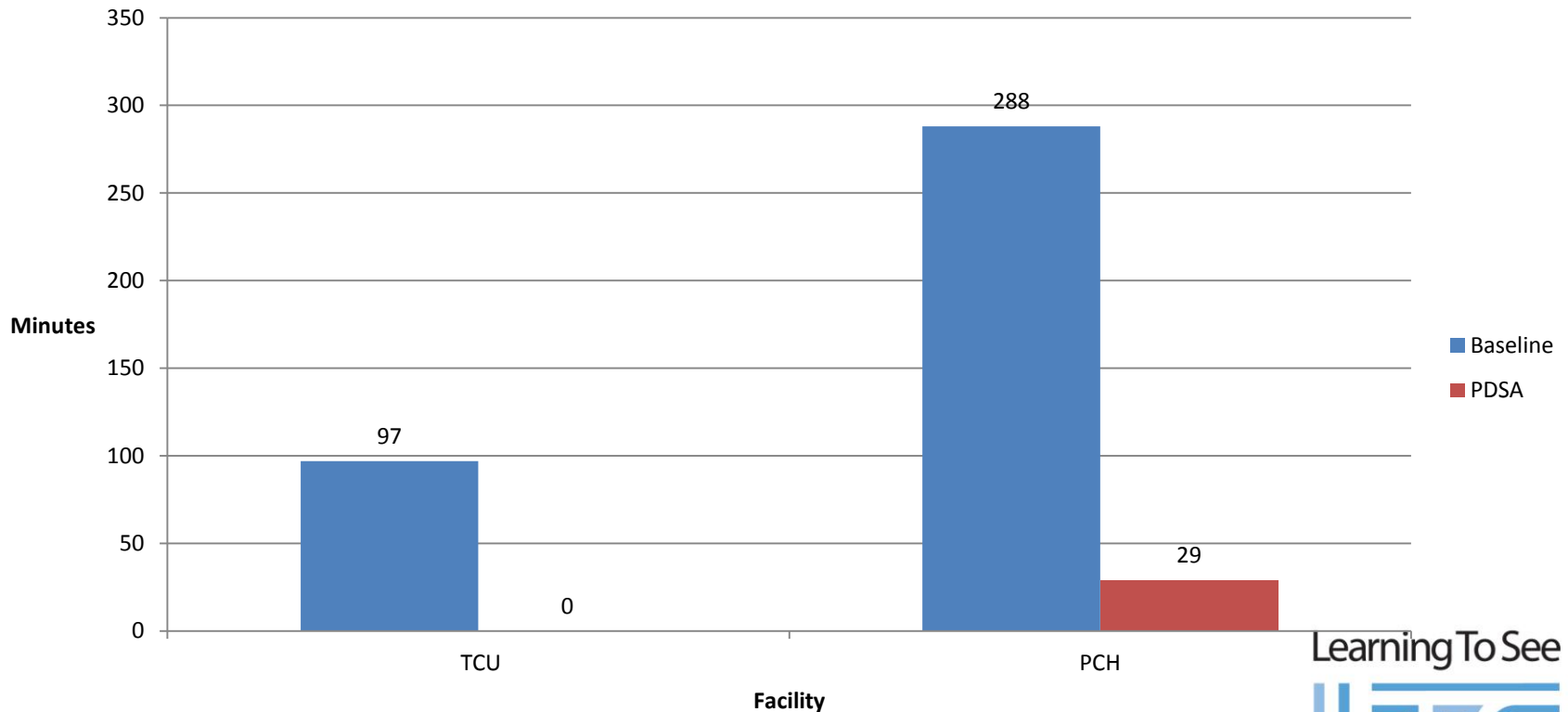


SAVINGS = 18 mins saved over 2 weeks = 36 mins over 4 wks / 1 month

**100% reduction of stocking for laundry workers in TCU.**

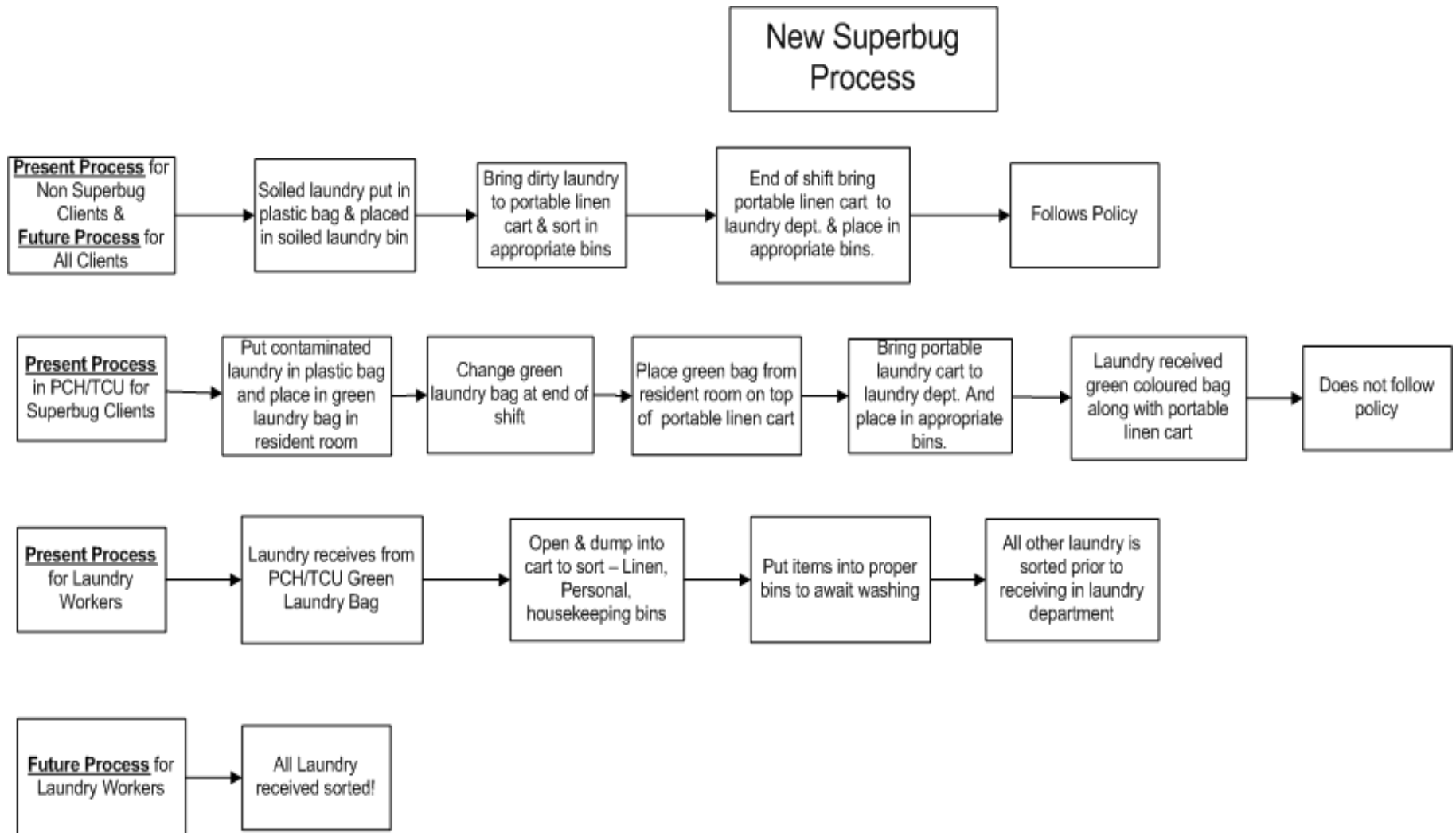
**90% reduction of stocking for laundry workers in PCH.**

**Stocking on PCH & TCU**



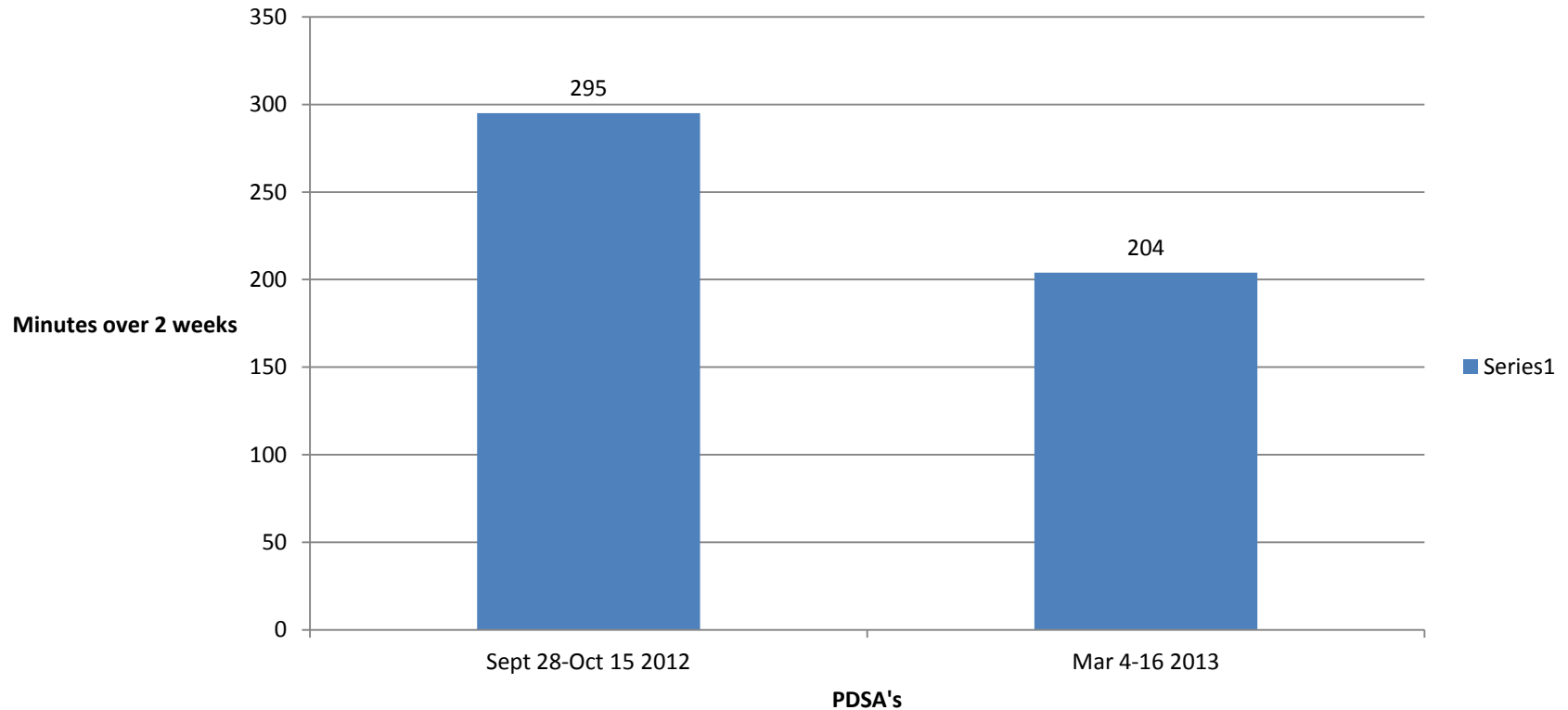
**SAVINGS = 4.3 hrs saved over 2 weeks = 8.6 hours over 4 wks / 1 month**

# HCA's will follow policy 100% in managing contaminated laundry



# HCA's will follow policy 100% in managing contaminated laundry

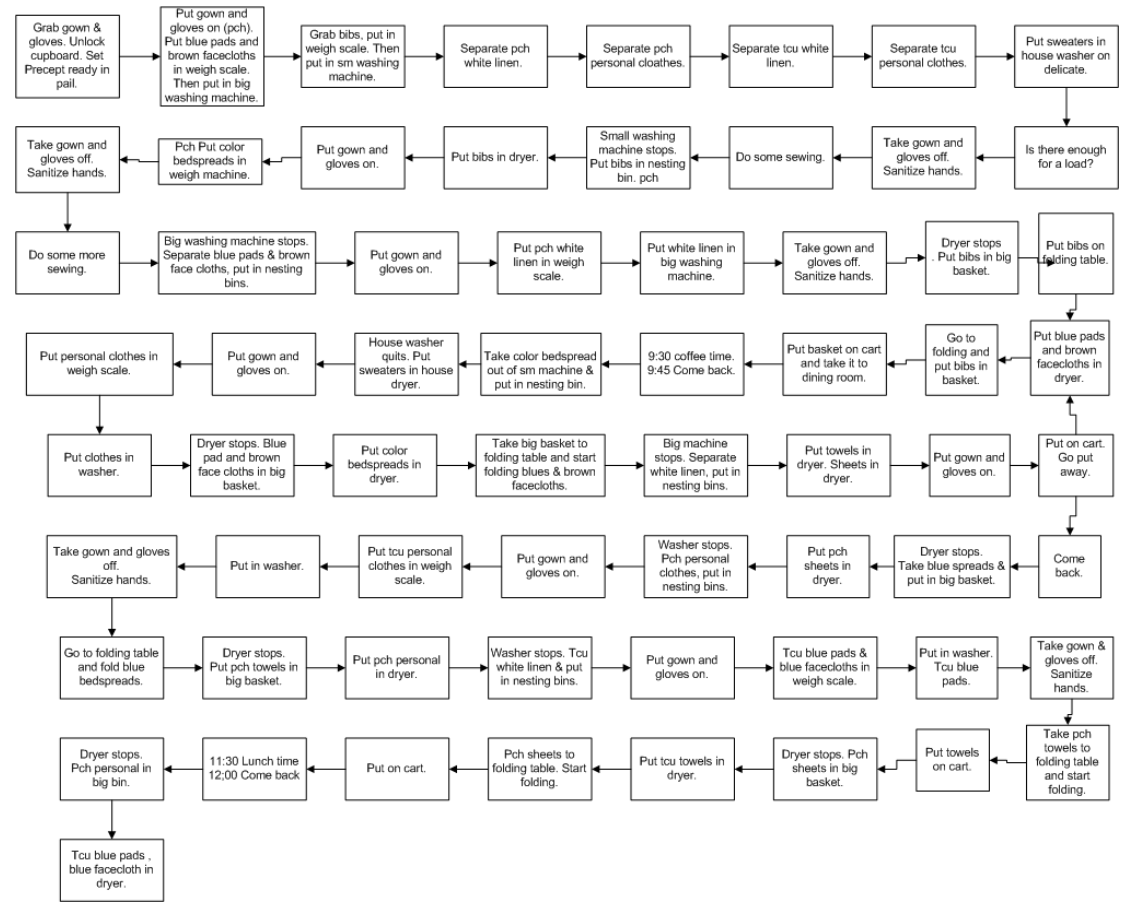
## Total Time Sorting Laundry in Two Week Periods



$295 - 204 = 91$  mins = 1 hr 31 minutes saved/2 week period

# Laundry workers will have standardized work routines 100%

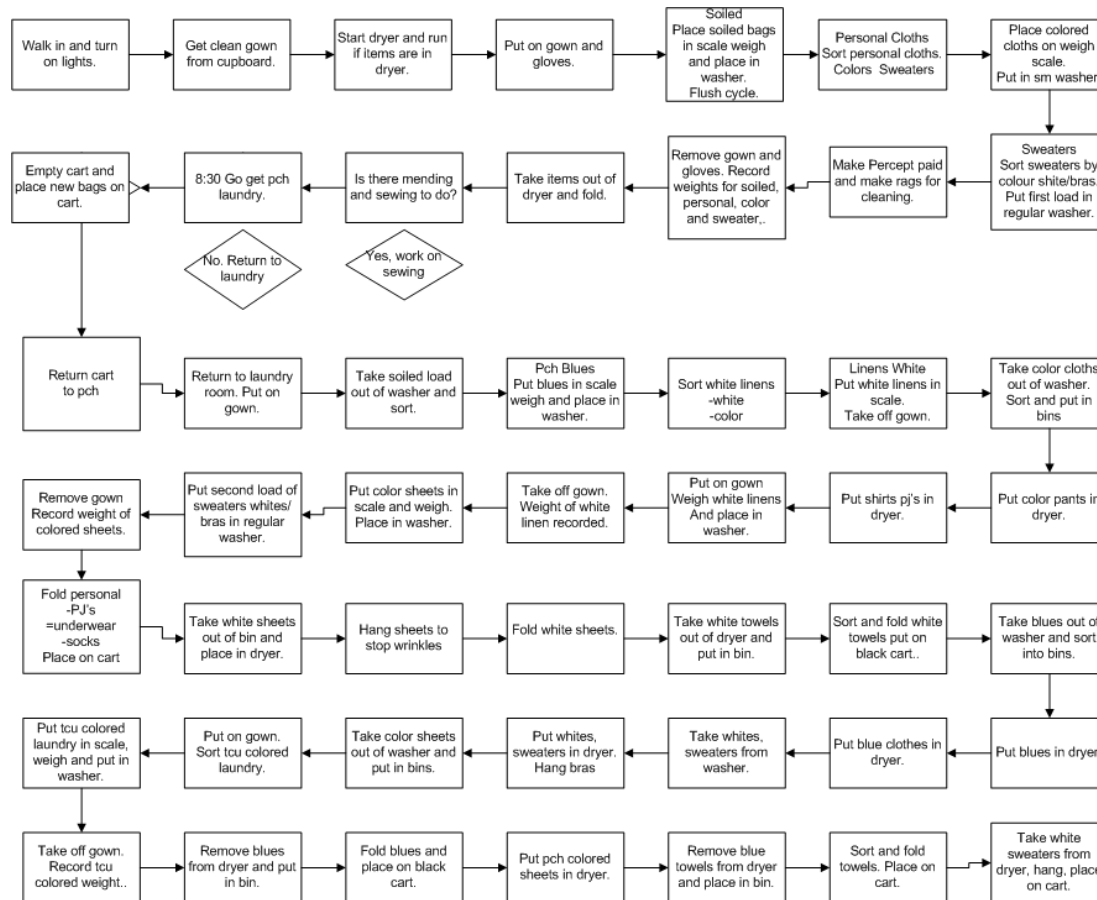
## Worker #1 Pattern





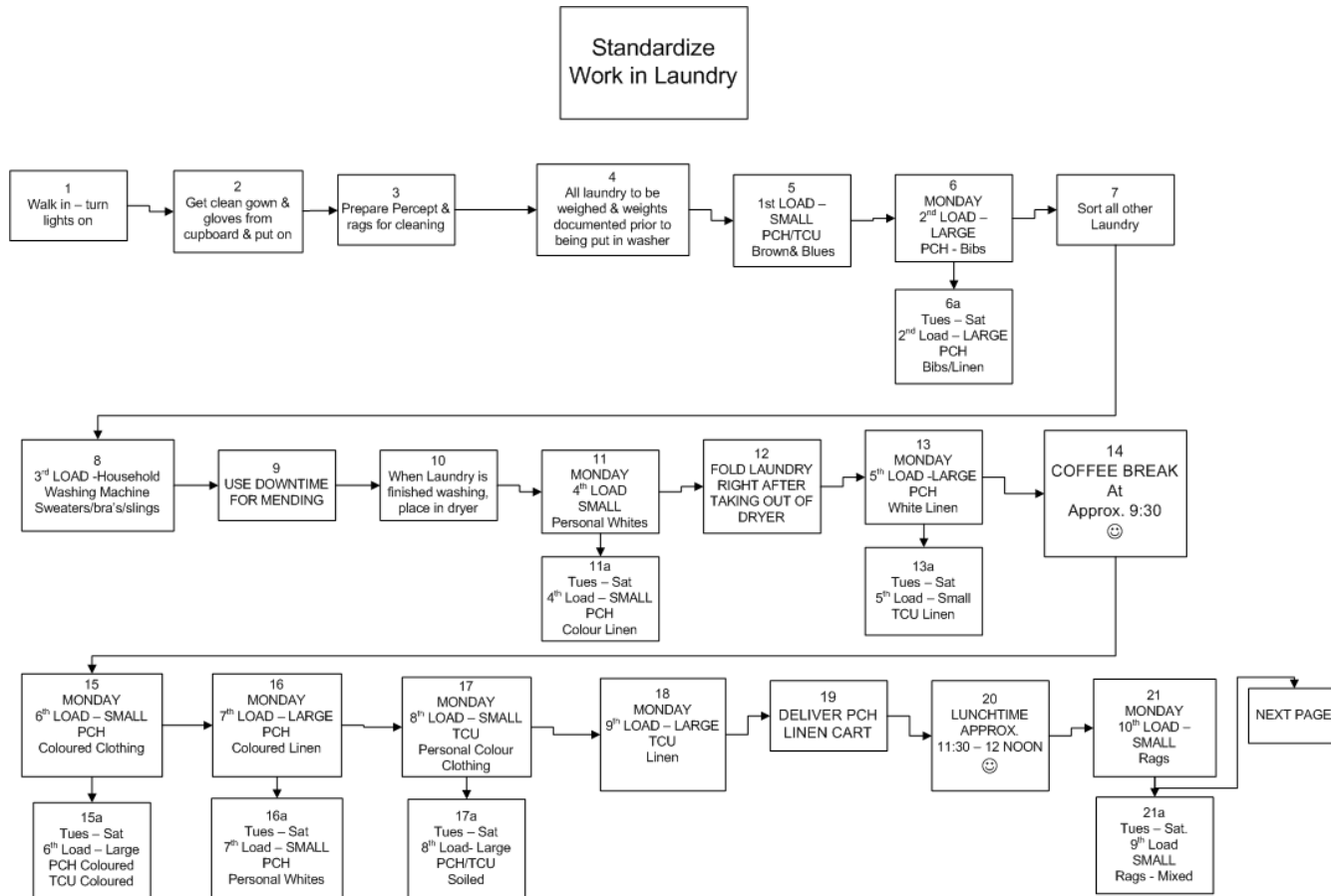
# Laundry workers will have standardized work routines 100%

## Worker #2 Pattern



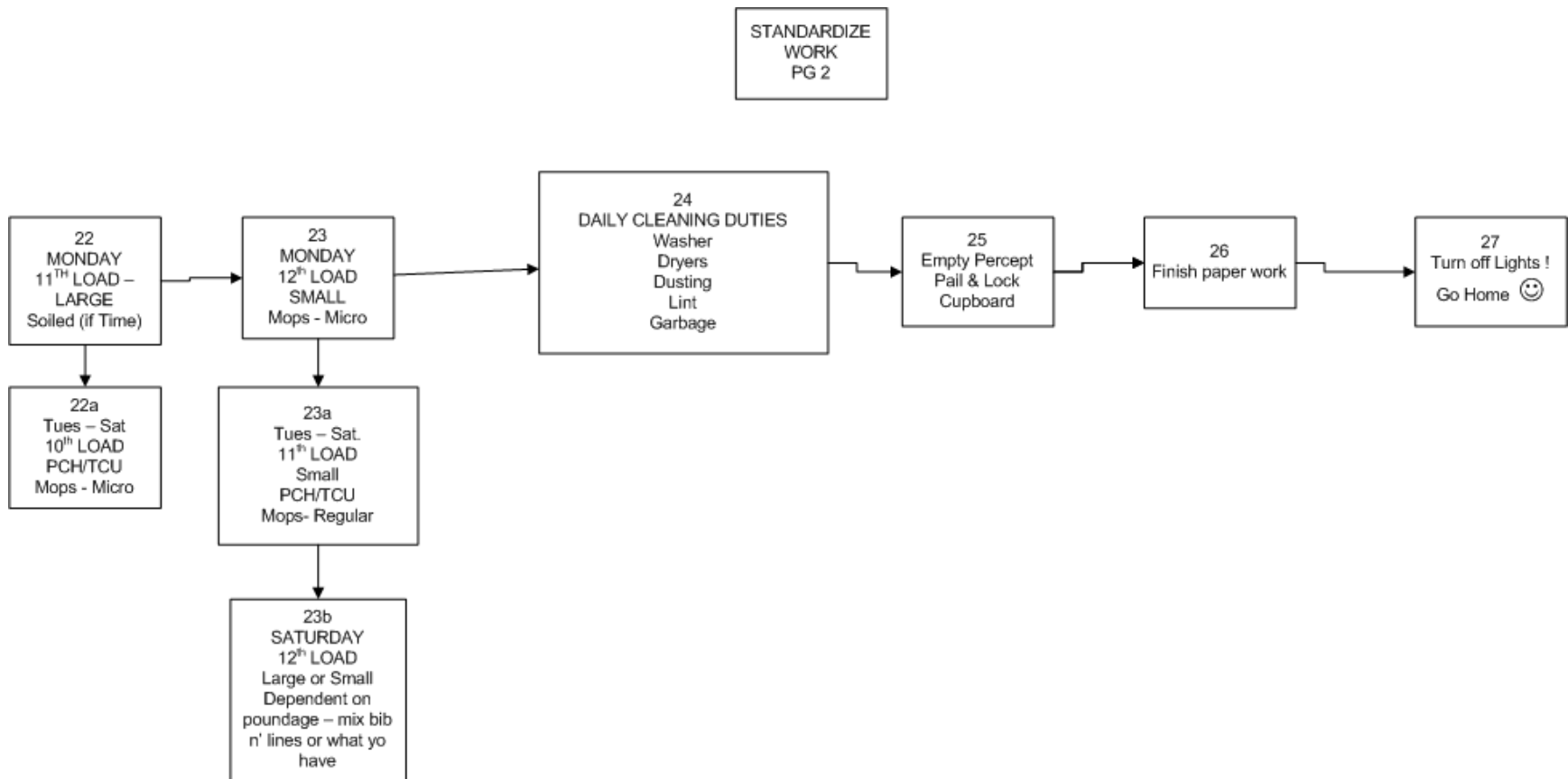
# Laundry workers will have standardized work routines 100%

## New Standardized Work Pattern



# Laundry workers will have standardized work routines 100%

## New Standardized Work Pattern



# Control

What controls have we put in place to ensure that performance does not lapse?

- **This writer to monitor Foreign Objects (FO) Tracking Sheet. It will be forwarded to me for monitoring for 6 months. # of FO and type of tracking can be monitored.**
- **This writer will visit St. Claude in 3 months and at 6 months to ensure laundry is not folded by checking linen closets.**
- **Housekeeping Lead to monitor other changes on a regular basis. This worker to check in with her at 3 and 6 months to ensure compliance.**

Learning To See



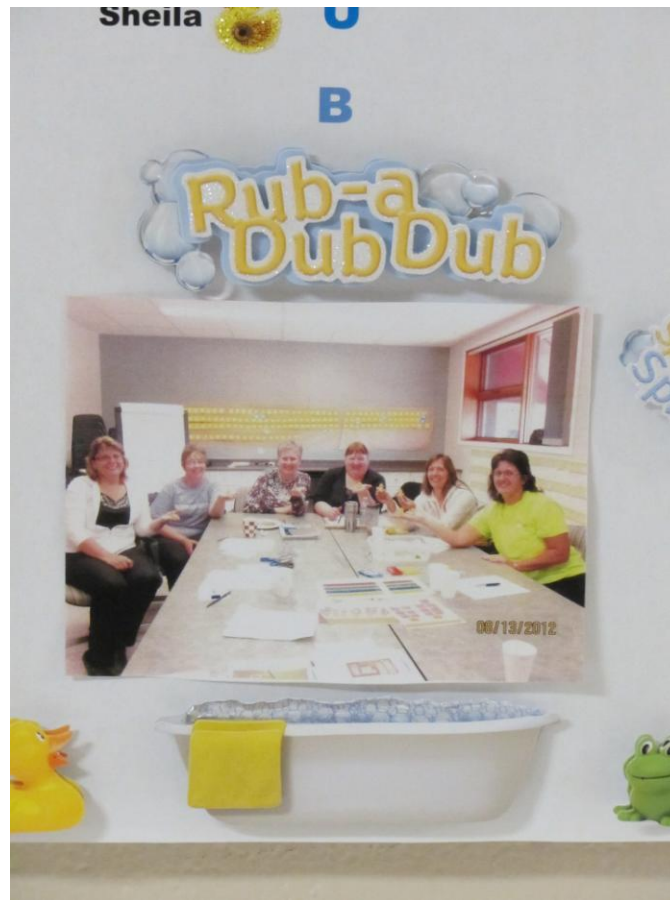
CONSULTING

# Lessons Learned

What were some of the key things we learned about quality improvement while doing this project?

- **Enjoyed Whitebelt training and learned lots from the day.**
- **Communication board worked well. Kept people informed; used as an opportunity to ask for feedback. Will use it for future too as a way to remind people about Foreign Objects. Will use it as a reminder and to play game with it.**
- **Able to see how brainstorming works – and pleased with results!**
- **Increased communication between departments – very useful!**
- **Not an easy journey but worthwhile!**

# St. Claude Laundry Lean Team



1/15/2015