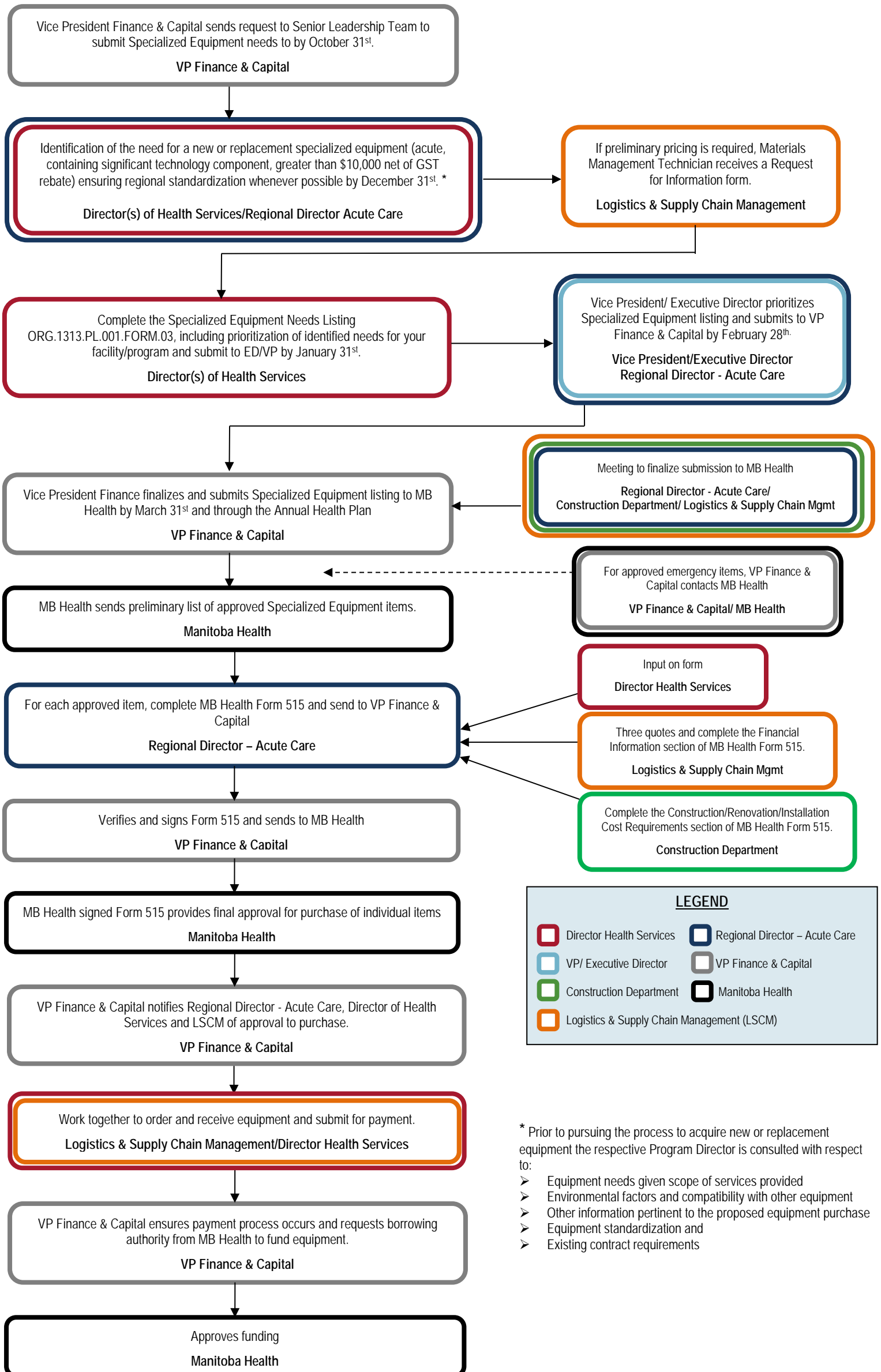


Specialized Equipment Request and Authorization Process



LEGEND

 Director Health Services	 Regional Director – Acute Care
 VP/ Executive Director	 VP Finance & Capital
 Construction Department	 Manitoba Health
 Logistics & Supply Chain Management (LSCM)	

- * Prior to pursuing the process to acquire new or replacement equipment the respective Program Director is consulted with respect to:
- Equipment needs given scope of services provided
 - Environmental factors and compatibility with other equipment
 - Other information pertinent to the proposed equipment purchase
 - Equipment standardization and
 - Existing contract requirements