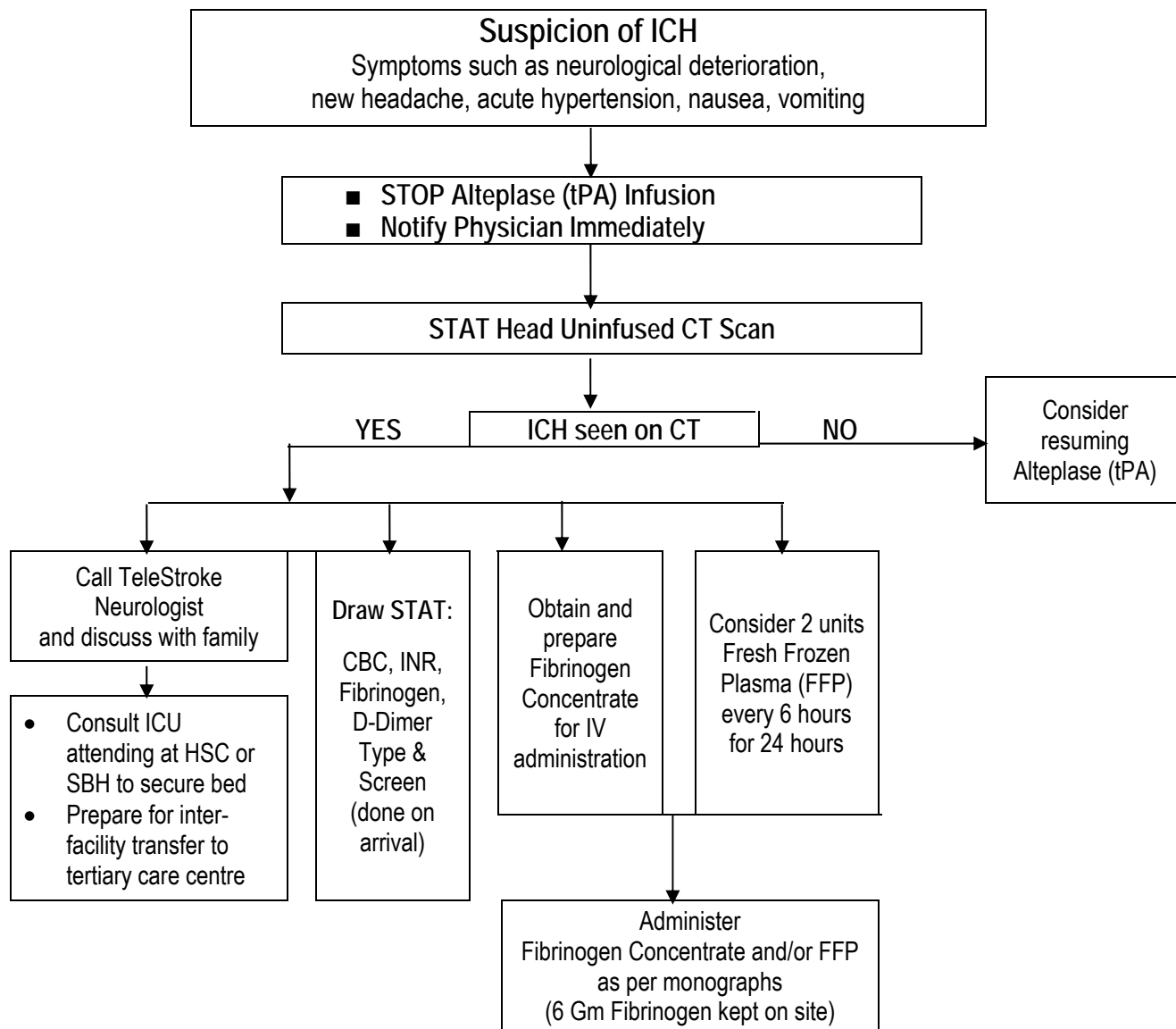


STROKE ALGORITHM for SUSPECTED INTRACRANIAL HEMORRHAGE (ICH) DURING AND POST ALTEPLASE (tPA) INFUSION



Additional Considerations/Guidelines:

- For Hgb less than 70 g/L, transfuse 2 units of packed red blood cells (PRBC);
- Consider platelet transfusion if less than $100 \times 10^9/L$ or if drug-induced platelet dysfunction is suspected;
- Repeat CBC, INR, fibrinogen and D-Dimer every 2 hours until bleeding stops.